

## WIPER AND WASHER SYSTEMS

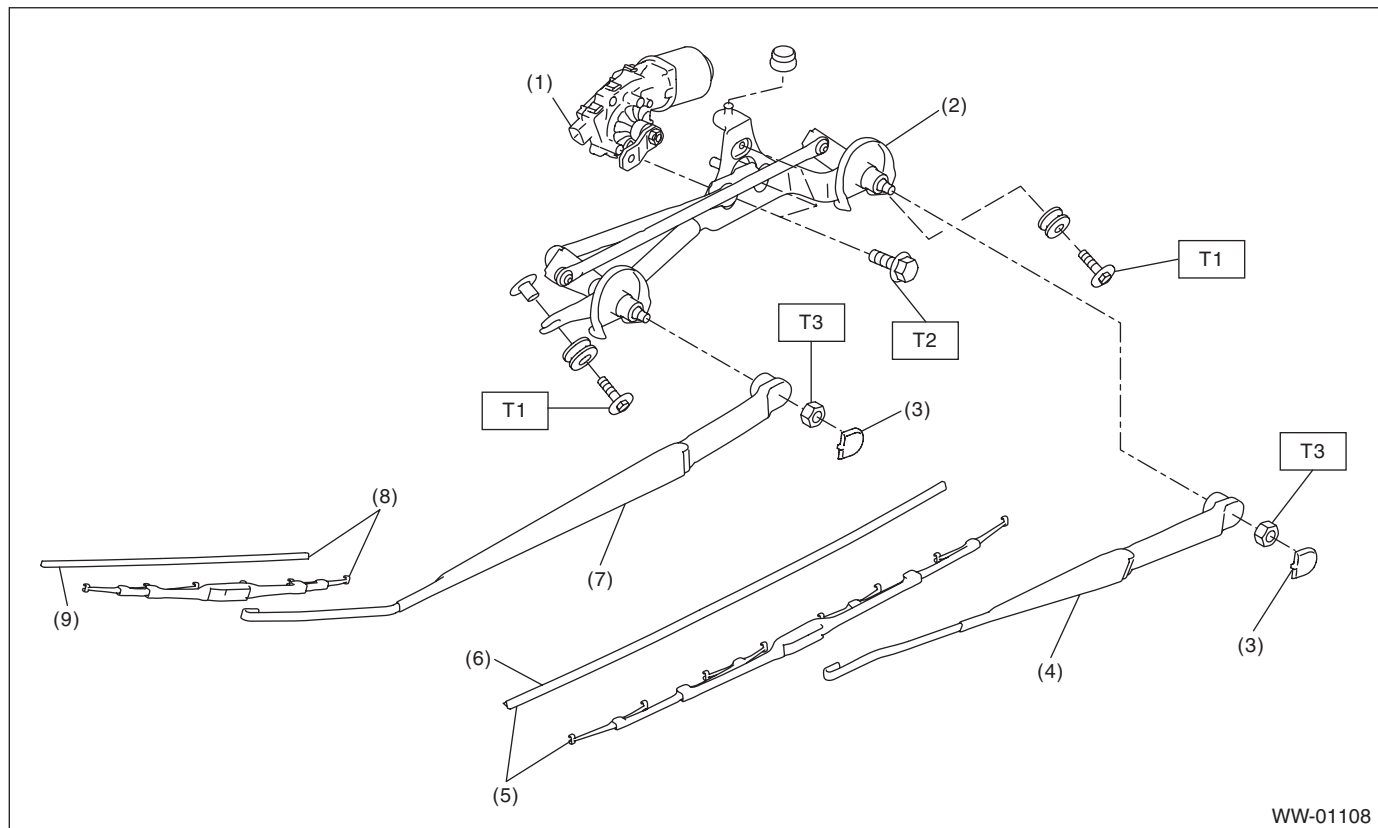
## 1. General Description

## A: SPECIFICATION

Front wiper motor	Input	12 V — 72 W or less
Front washer motor	Pump type	Centrifugal
	Input	12 V — 60 W or less

## B: COMPONENT

## 1. FRONT WIPER



- |     |                                      |     |   |
|-----|--------------------------------------|-----|---|
| (1) | Motor ASSY - windshield wiper        | (6) | Rubber ASSY - windshield wiper driver   |
| (2) | Link ASSY - windshield wiper         | (7) | Arm ASSY - windshield wiper assistor    |
| (3) | Cover - windshield wiper arm         | (8) | Blade ASSY - windshield wiper assistor  |
| (4) | Arm ASSY - windshield wiper driver   | (9) | Rubber ASSY - windshield wiper assistor |
| (5) | Blade ASSY - windshield wiper driver |     |   |

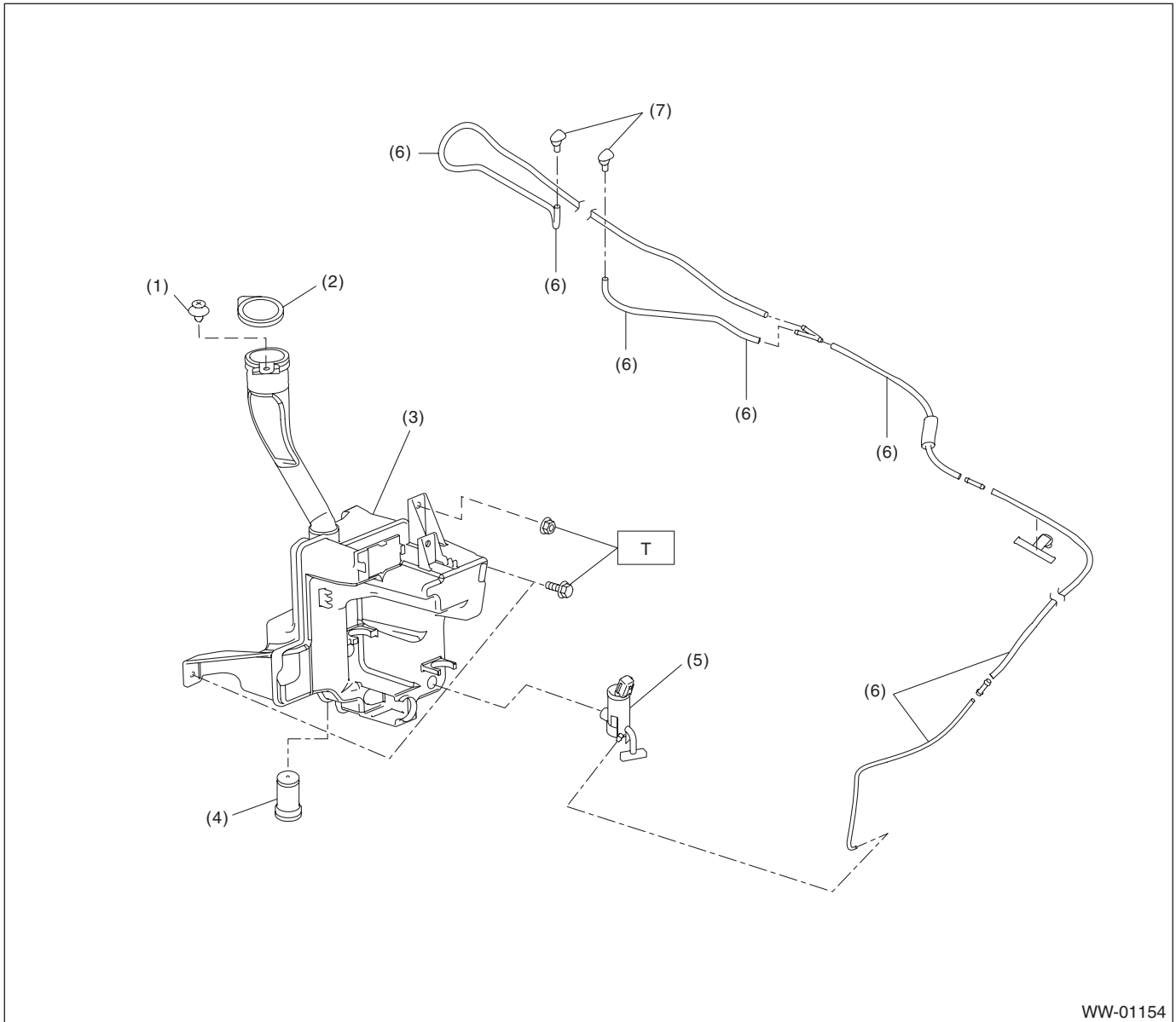
**Tightening torque: N·m (kgf-m, ft-lb)**

***T1: 5.5 (0.6, 4.1)***

**$T2: 6 (0.6, 4.4)$**

***T3: 26 (2.7, 19.2)***

### 2. WASHER TANK



WW-01154

- |                                     |                                    |
|-------------------------------------|------------------------------------|
| (1) Clip                            | (5) Motor pump ASSY - washer front |
| (2) Holder - windshield washer tank | (6) Hose - windshield washer       |
| (3) Tank - washer                   | (7) Nozzle - windshield washer     |
| (4) Sensor - washer tank            |                                    |

**Tightening torque: N·m (kgf-m, ft-lb)**

**T: 6 (0.6, 4.4)**

## General Description

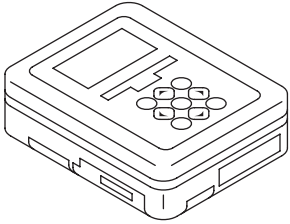
### WIPER AND WASHER SYSTEMS

#### C: CAUTION

- Be careful of the following items. Failing to do so may cause the airbag system malfunction.
  - Yellow connectors and harnesses with yellow tapes around them are the connectors and harnesses for the airbag system. When using a tester on these circuits, follow the cautions of "AIRBAG SYSTEM". <Ref. to AB-9, CAUTION, General Description.>
  - Be careful not to damage the airbag system wiring harness when servicing the electrical parts around the steering column.
- When connecting the pipe hoses, be careful not to cause bend or blockage.
- If even a small amount of silicon oil or grease enters the tank - washer and the washer fluid passages, an oil film will be formed on the glass and will cause the wiper to chatter and judder. Make sure that no oil comes into contact with the system.

#### D: PREPARATION TOOL

##### 1. SPECIAL TOOL

ILLUSTRATION	TOOL NUMBER	DESCRIPTION	REMARKS
 ST1B022XU0	1B022XU0	SUBARU SELECT MONITOR III KIT	Used for setting of each function and trouble-shooting for electrical system.

##### 2. GENERAL TOOL

TOOL NAME	REMARKS
Circuit tester	Used for measuring voltage and resistance.